

Preventive Maintenance Inspection
at
Anytown II Power
7/25/2002

General Information

This report was generated using the VisIR[®] Ti 200 thermal imaging camera. The thermal images were acquired with the camera and transferred to PC for analysis and reporting using the VisAir[®] wireless networking capability of the camera.

The visual images in this report were provided by the client as part of their internal asset register records.

The Report content was generated using the "IR Reporter" Wizard. Thermal analysis and measurements were made using the Thermoteknix TherMonitor[®] software.

The images and analysis in this report are provided to give an indication of the performance of the VisIR[®] camera and are not necessarily an indication of good Thermographic practice.

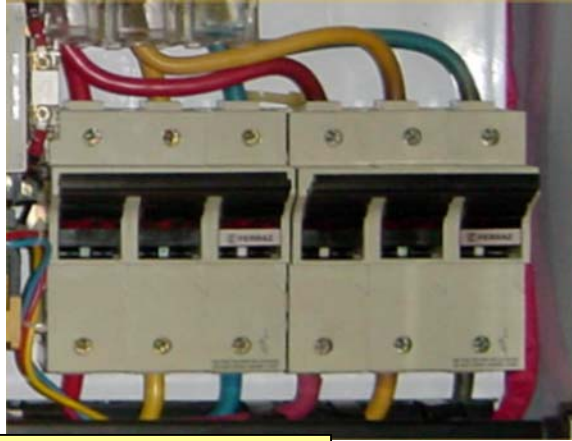
Alistair Brown

Table of Contents

Section	Equipment	Page
Motor room	Three phase fuse holder	3
Xformer pen #1	Outgoing transformer	4
Pump house	M 223	5
Stack	Stack	6

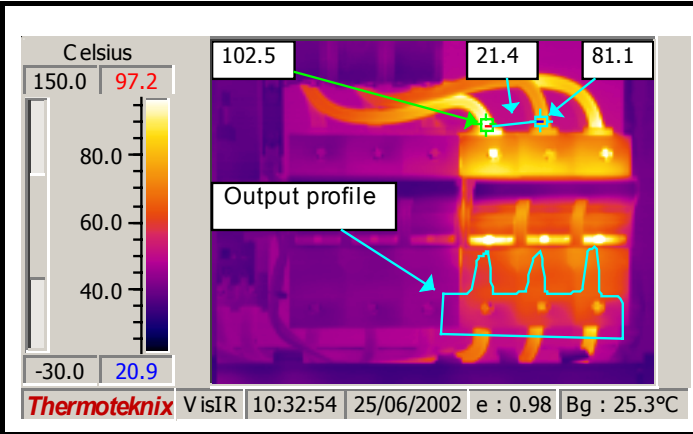
	Inspected Equipment	Operator:
	Three phase fuse holder	Alistair Brown

Identification



Section	Motor room
Equipment	Three phase fuse holder
Additional Information	"High speed" setting
Date	25/06/2002
Time	10:32 AM
Working conditions:	
2,500 RPM > 2Hrs	

Fault Description



Fault

All phases at elevated temperatures. Differential between Red and Yellow Phase of 21 Degrees.

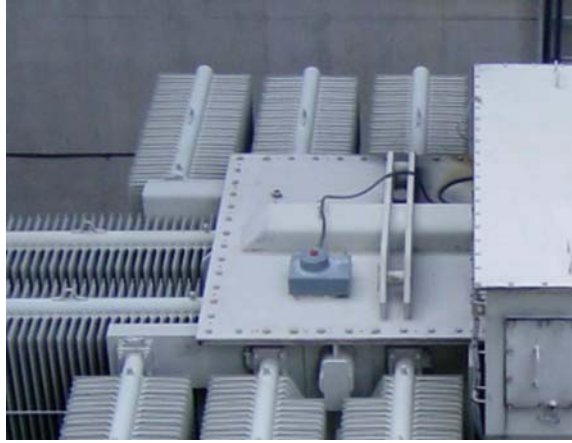
Emissivity	0.98	Difference	21.4°C
Spot 1	81.1°C	Spot 2	102.5°C

Recommendation

Check currents with Clamp Meter, check quality of all connections.
Re inspect weekly.

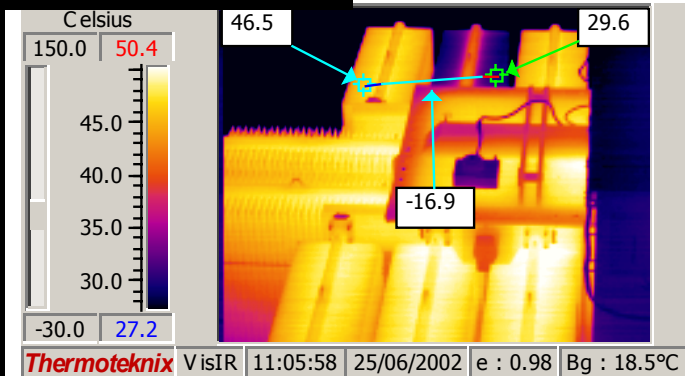
	Inspected Equipment	Operator:
	Outgoing transformer	Alistair Brown

Identification



Section	Xformer pen #1
Equipment	Grid transformer
Additional Information	Left hand rear bank
Date	25/06/2002
Time	11:05 AM
Working conditions:	
Full load	

Fault Description



Fault
Low temperature on center cooling bank

Emissivity	0.98	Difference	-16.9°C
Spot 1	46.5°C	Spot 2	29.6°C

Recommendation

Check for oil leak, blockage or air lock on next planned outage.

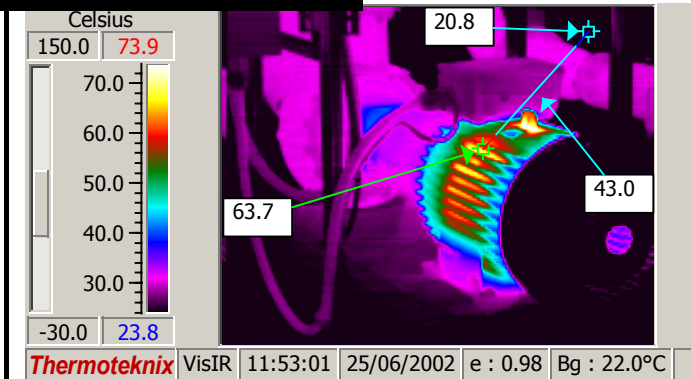
	Inspected Equipment	Operator:
	M 223	Alistair Brown

Identification



Section	Pump house
Equipment	M223
Additional Information	Nil
Date	25/06/2002
Time	11:53 AM
Working conditions:	
2,700 L/Hr	

Fault Description



Fault
Nil

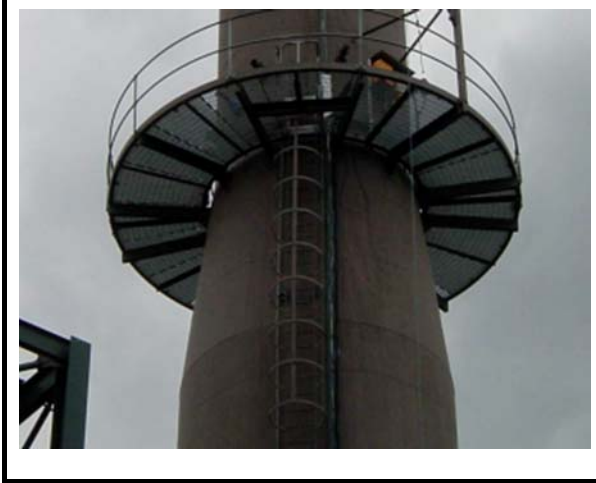
Emissivity	0.98	Difference	43.0°C
Spot 1	20.8°C	Spot 2	63.7°C

Recommendation

No Action required for reference only

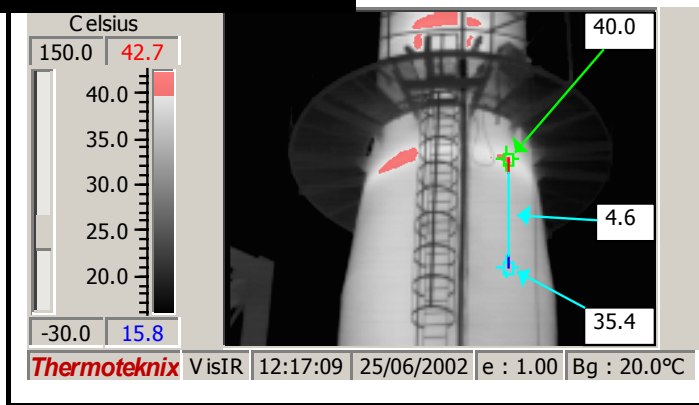
	Inspected Equipment	Operator:
	Stack	Alistair Brown

Identification



Section	Stack
Equipment	-
Additional Information	West view
Date	25/06/2002
Time	12:17 PM
Working conditions:	
Full load	

Fault Description



Fault
nil

Emissivity	1	Difference	4.6°C
Spot 1	35.4°C	Spot 2	40.0°C

Recommendation

For reference only. Red Isotherm shows temperatures in excess of 40°C.

Summary of Inspection at Anytown II Power

List of inspected items

Section	Equipment	Fault	Recommendation
Motor room	Three phase fuse holder	All phases at elevated temperatures. Differential between Red and Yellow Phase of 21 Degrees.	Check currents with Clamp Meter, check quality of all connections. Re inspect weekly.
Xformer pen #1	Outgoing transformer	Low temperature on center cooling bank	Check for oil leak, blockage or air lock on next planned outage.
Pump house	M 223	Nil	No Action required for reference only
Stack	Stack	nil	For reference only. Red Isotherm shows temperatures in excess of 40